

H 1062 Serie Carmen

Materiale Ottone | Material Brass

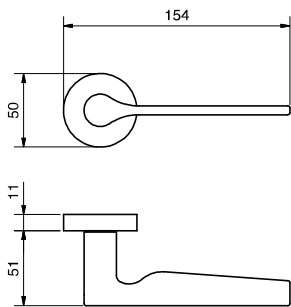
design Valli Workshop

Valli&Valli

ASSA ABLOY

Maniglia per porta | Door handle

Finiture | Finishes



Cromosat

Bronzopaco

Nikelnero

Neropaco



Disponibile anche in versione antincendio secondo normativa Ö-NORM B 3859:2011
Available also in the fire-proof version according Ö-NORM B 3859:2011 standards



K 1121 / K 1121 Y
Pag. 138



K 1704 R6-7-8 50 BZG - 85
Pag. 153



K 1713 / K 1713 Y
Pag. 134



K 1704 RS6-7-8 50 BZG - 85
Pag. 154



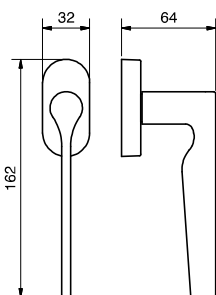
K 1145 / K 1145 Y
Pag. 135



K 1123 RG6-7-8 BZG - 75
Pag. 152



In abbinamento sono disponibili | Coordinated accessories



H 1062 FRS-41



